

Contents

Welcome to The Wild West on-line Help window. We've provided this Help file in case you don't have the Owner's Manual handy.

The following Help Topics are available for finding out more about The Wild West program.

If you get stuck when using the program, or need help using a certain function, the following Help Topics will provide you with more information about The Wild West. Click on any topic in [green underline](#) with the mouse to learn more about that topic.

[Using the MAIN Screen](#)

[Using the EPISODE Screen](#)

All About OPTIONS

[SCRIPT Screen](#)

[BOOKS Screen](#)

[MAPS Screen](#)

[TIMELINES Screen](#)

[HANGMAN Screen](#)

[MUSIC Screen](#)

[LYRICS Screen](#)

[How to Use The Wild West HELP](#)

Clicking on [How to Use The Wild West HELP](#) above brings up a separate Help window that provides extensive information on how to get the most out of this Help window. Info about using Menu bar and Button bar commands is also covered.

To return to this window from any Help screen, click on the **Contents** button above.

To get out of this Help window and get back to the program, select **Exit** from the **File** menu.

Using the MAIN Screen

The Main screen is displayed after the Welcome screens. Think of the Main screen as your "home base" where the ten episodes of the program are selected.

Click on any function below - outlined in green - to learn more about that function.



For more Help with The Wild West, click on the **C**ontents button above. This will take you to the Contents window which lists additional topics you can select for more information.

To get out of this Help window and get back to the program, select **E**xit from the **F**ile menu.

Using the EPISODE Screen

The EPISODE Screen is used to view the episode you selected in the MAIN screen. The functions on this screen allow you to control the video's playback and volume as well as provide instant access to key topics and sub-sections related to the selected episode.

Click on any function below - outlined in green - to learn more about that function.



For more Help with The Wild West, click on the **Contents** button above. This will take you to the Contents window which lists additional topics you can select for more information. To get out of this Help window and get back to the program, select **Exit** from the **File** menu.

SCRIPT Screen

This sub-section supplements the episode with a written transcript of the episode's narration and dialogs.

Click on any function below - outlined in green - to learn more about that function.

The screenshot shows a software interface for a script. The background is a collage of old newspaper clippings. The main text area, outlined in green, contains the following text:

NARRATOR:
THE FRONTIER HAD CAST A SPELL OVER AMERICA. THE EAST, NORTH AND SOUTH FADED FROM THE COMPASS AND ONLY ONE DIRECTION NOW REMAINED. BENEATH A DISTANT RAINBOW LAY UNLIMITED POSSIBILITIES. GOLD, GLORY, A NEW LIFE AWAITED THOSE WHO FOLLOWED THE CALL.

HORACE GREELEY:
"Go West, Young Man! Go West -- and grow up with the country!"
-Horace Greeley, Editor, New York Tribune

NARRATOR:
FOR MANY, "GOING WEST" MEANT GOING SOUTH ON A FOUR MONTH, 15,000 MILE, GUT-WRENCHING

Below the text is a small box with the number '1' and a green checkmark icon.

To the right is an 'INDEX' panel, also outlined in green, with a scroll bar. The index list includes:

- Big Four, The
- Central Pacific RR
- Dodge, Grenville M.
- Greeley, Horace
- Judah, Theodore
- Railroad
- Construction
- Travel
- Rail
- Stagecoach
- Steamboat
- Union Pacific RR

At the bottom of the screen are five buttons, each outlined in green: 'COPY', 'BOOKS', 'BACK', 'MAIN', 'HELP', and 'QUIT'.

For more Help with The Wild West, click on the **Contents** button above. This will take you to the Contents window which lists additional topics you can select for more information.

To get out of this Help window and get back to the program, select **Exit** from the **File** menu.

MAPS Screen

To aid in understanding the geographic setting of the selected episode, this screen provides one or more maps to help illustrate the information from that episode.

Click on any function below - outlined in green - to learn more about that function.



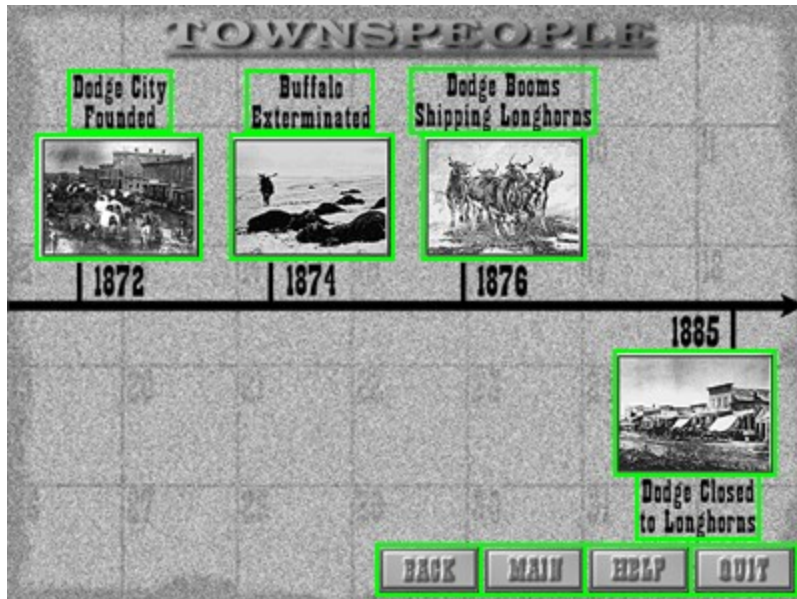
For more Help with The Wild West, click on the **Contents** button above. This will take you to the Contents window which lists additional topics you can select for more information.

To get out of this Help window and get back to the program, select **Exit** from the **File** menu.

TIMELINES Screen

To aid in understanding the chronology of the selected episode, this screen provides a historical timeline to illustrate the sequence of events in the episode.

Click on any function below - outlined in green - to learn more about that function.



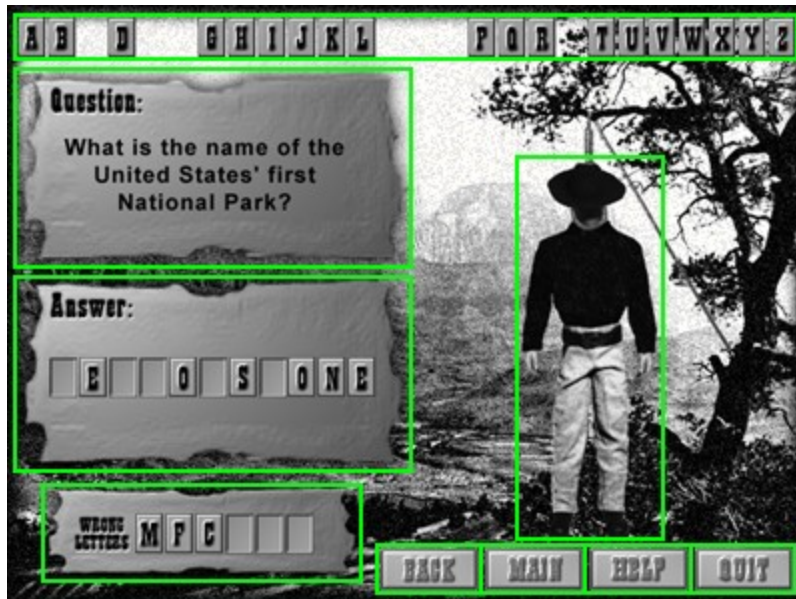
For more Help with The Wild West, click on the **C**ontents button above. This will take you to the Contents window which lists additional topics you can select for more information.

To get out of this Help window and get back to the program, select **E**xit from the **F**ile menu.

HANGMAN Screen

Want to test your understanding of the current episode? Hangman is the scene for a final exam where you're rewarded for your knowledge or penalized for your mistakes.

Click on any function below - outlined in green - to learn more about that function.



For more Help with The Wild West, click on the **C**ontents button above. This will take you to the Contents window which lists additional topics you can select for more information.

To get out of this Help window and get back to the program, select **E**xit from the **F**ile menu.

How to Use The Wild West **HELP**

Clicking the Help button on any screen opens this Help window. The Help window is context sensitive. This means that if you click the Help button from the "MAIN" screen, help for the MAIN Screen will be displayed; if you click the Help button from the "EPISODE Screen", help for that screen will be displayed, etc.

Once the Help window is open, you can select other topic windows and view all the Help information for The Wild West. The Help window will provide you with general and specific Help on using The Wild West.

By pointing to any function outlined in **green** and clicking once with the mouse, a pop-up window will appear that will give you information about that function. To get out of the pop-up window, click again with the mouse or press a key on your computer's keyboard.

A comprehensive help screen that describes how to use this Help window can be called up by clicking on the **Help** menu above and selecting the **How to Use Help** item. "How to Use Help" lists numerous topics that you can select that will teach you specific Help window techniques including Help Basics.

Below the Menu bar is a Button bar that will assist you in getting around The Wild West Help quickly. To learn how these buttons work, click on the **Help** menu above and select the **How to Use Help** item. At the very bottom of the window is a topic called Help Buttons that tells you how to use The Wild West **HELP** command buttons.

COPY Button

If you would like a copy of the displayed text - or just a portion of it - click the **COPY** button. The **COPY** dialog box will be displayed allowing you to save a copy of the entire text (click the "**Copy ALL**" button) or a range of pages (enter the first page of the desired page range in the first box and the last inclusive page in the second box). Click **OK** to continue or **CANCEL** to exit this function.

If you click **OK**, the "Save As" dialog box appears. A default file name appears in the File Name box; enter a new name if you want. You are also able to select a new directory and drive path* if desired. Click **OK** to save the transcript. It will be saved to the indicated path as a standard ASCII ".txt" Text File. Click **CANCEL** to exit without saving. Once the .txt file has been saved to disk, you can open it in most word processors. This enables you to edit the text, apply any formatting you like and print it if desired.

* If you selected the Educator's Install when The Wild West was installed on your computer's hard drive, the default path is drive **A:** (floppy disk drive) and cannot be changed.

Click with the mouse or press a key to continue...

BOOKS Button

Clicking the **BOOKS** button displays a bibliography of the selected episode's related works for further study.

Click with the mouse or press a key to continue...

BACK Button

Clicking this button reverts back to the section of the program that was previously running.

For example, clicking **BACK** while in a TIMELINE screen, playing HANGMAN, viewing MAPS or reading a SCRIPT reverts to the EPISODE Screen; clicking **BACK** while the program is displaying BOOKS reverts to SCRIPT.

The **BACK** button avoids having to return to the MAIN Screen when you are finished using a sub-section.

Click with the mouse or press a key to continue...

MAIN Button

Clicking **MAIN** takes the program back to the MAIN Screen where you can select another episode to view.

Click with the mouse or press a key to continue...

HELP Button

Clicking the **HELP** button calls up the Windows on-line help screen that will assist you in using The Wild West in the event you need instructions and this manual isn't handy. Help is "context-sensitive": this means that clicking **HELP** from any screen will display the help information for that screen.

Click with the mouse or press a key to continue...

QUIT Button

Clicking the **QUIT** button exits the program.

Click with the mouse or press a key to continue...

FX Button

Normally, the program will play a sound effect when any of the function buttons are clicked with the mouse. If you would like to defeat this feature, clicking this button will turn off sound effects playback when a button is clicked. Clicking it again turns **FX** back on.

Click with the mouse or press a key to continue...

Episode Title

The **MAIN** Screen depicts a map of the western region of the United States. The titles of the ten episodes are placed on the map over the geographic region where the episodes take place. Click on any title with the mouse to view that episode.

Episodes that play from Disk 1 are displayed in yellow;
Episodes that play from Disk 2 are displayed in blue.

Click with the mouse or press a key to continue...

Video Window

When the **EPISODE** Screen is displayed after selecting a title in the **MAIN** Screen, the selected episode will begin to play immediately in this area of the screen.

Click with the mouse or press a key to continue...

PLAY/STOP Button

This button allows you to play and stop the video. This function switches between playback and stop when clicked with the mouse. You can switch between play and stop anytime.

Click with the mouse or press a key to continue...

VOLUME Button

To adjust the volume of the videos soundtrack, click this button with the mouse and a pop-up volume slider will appear. To change the volume level, click the slide knob and drag it upwards to increase the volume; drag it downwards to decrease the volume.

Click with the mouse or press a key to continue...

Scrub Bar

During playback, the scrub button will advance from left to right along the horizontal bar as the video plays. At any time during play, or even when the video is stopped, you can click the scrub button with the mouse and drag it to the left or right. This is the equivalent to rewind (dragging to the left) and fast forward (dragging to the right).

Click with the mouse or press a key to continue...

Index Window

The index window provides a powerful search function for quickly viewing key topics - people, places and things - that appear within each episode. When an episode is selected, the index window will display a complete list of all the topics covered in that episode. To go to the point in the episode where a topic is featured in the video, click on its name in the index window. The episode will immediately go to that spot in the video and play.

Click with the mouse or press a key to continue...

< Previous Button

If you go to a "next" appearance of a topic, this arrow button beneath the index window becomes active. Clicking the Previous button allows you to revert back to the last portion of the video where the selected topic appears. If there is another previous part of the episode that covers that topic, the < remains active. If not, the button goes inactive and becomes dimmed.

If a selected topic has only one occurrence in the episode, this button will be inactive and dimmed.

Click with the mouse or press a key to continue...

Next > Button

If the selected topic is mentioned more than once in the episode, this arrow button beneath the Index Window becomes active. Clicking the Next button takes the episode to the next spot in the video where that topic appears. If there is another part of the episode that covers that topic, the > remains active and can be clicked again to advance to the next occurrence. If not, the button goes inactive and becomes dimmed.

If a selected topic has only one occurrence in the episode, this button will be inactive and dimmed.

Click with the mouse or press a key to continue...

OPTIONS Button

Clicking the **OPTIONS** button on the **EPISODE** Screen displays a dialog box that allows you to select one of five options that are associated with the selected episode.

Click with the mouse or press a key to continue...

Letters

Solve the question by clicking on the letters you think make up the answer. You can also enter letters by typing them on your keyboard.

Click with the mouse or press a key to continue...

Question Box

A question related to the current episode is selected at random and appears here. Your goal is to answer six questions by typing or clicking on the displayed letters that make up the answer before six wrong letters are picked.

Click with the mouse or press a key to continue...

Answer Box

As you solve the question, correct letters picked from the screen or typed on the keyboard appear here.

A set of empty letter spaces comprising the words of the answer appears in the Answer box as a hint as to what the correct answer might be.

Click with the mouse or press a key to continue...

Wrong Letters Box

As you solve the question, incorrect letters picked from the screen or typed on the keyboard appear here. If you pick six wrong letters before six questions are answered correctly, you lose and the game ends.

Click with the mouse or press a key to continue...

Hangman

Every wrong letter entered as you attempt to solve the question causes one body part of the hangman to appear.

Click with the mouse or press a key to continue...

Topic Title

The topic title - a person, place or thing that is significant in this episode - appears here.

Click with the mouse or press a key to continue...

Picture

Each topic is illustrated with a picture and the year, or range of years, when it occurred.

For a description of the topic, click on its picture. A brief description will pop-up on the screen for you to read. When you are finished, click the **OK** button to close the text box.

Click with the mouse or press a key to continue...

Map Window

The map or maps that pertain to the current episode are displayed here.

Click with the mouse or press a key to continue...

Description Window

A brief description of the map that appears in the Map Window is displayed here.

Click with the mouse or press a key to continue...

< Previous Map Button

If you go to a "next" map, the < Previous arrow button beneath the map window becomes active. Clicking the < button allows you to revert back to the previous map in the list. If there is another previous map, the < remains active. When the first map for that episode is displayed, the < button goes inactive and becomes dimmed.

If the current episode has only one map, this button will be inactive and dimmed.

Click with the mouse or press a key to continue...

Next > Map Button

If the selected episode contains more than one map, the Next > arrow button beneath the map window becomes active. Clicking the > button displays the next map. If there is a third map, the > remains active and can be clicked again to advance to the next map. When the last map for that episode is displayed, the > button goes inactive and becomes dimmed.

If the current episode has only one map, this button will be inactive and dimmed.

Click with the mouse or press a key to continue...

< Previous Button

If you go to a "next" appearance of a topic, the < Previous arrow button beneath the index window becomes active. Clicking the < button allows you to revert back to the previous page in the script where the selected topic appears. If there is another previous part of the episode that covers that topic, the < remains active. If not, the button goes inactive and becomes dimmed.

If a selected topic has only one occurrence in the episode, this button will be inactive and dimmed.

Click with the mouse or press a key to continue...

Next > Button

If the selected topic is mentioned more than once in the episode, the Next > arrow button beneath the index window becomes active. Clicking the > button takes the episode to the next spot in the script where that topic appears. If there is another part of the episode that covers that topic, the > remains active and can be clicked again to advance to the next occurrence. If not, the button goes inactive and becomes dimmed.

If a selected topic has only one occurrence in the episode, this button will be inactive and dimmed.

Click with the mouse or press a key to continue...

Text Area

The written transcript of the current episode appears here.

Click with the mouse or press a key to continue...

Script Index

When the **SCRIPT** sub-section is selected, the index window will display the same list of the topics covered in the **EPISODE** Screen. To go to the point in the episode where a topic is featured in the script, click on its name in the index window. The episode will immediately go to the page in the script where the topic discussion begins.

Click with the mouse or press a key to continue...

Turn 1 Page Back

You can read the text at your own speed and can turn pages forward or back. To turn one page back, click once with the mouse here on the page curl.

Click with the mouse or press a key to continue...

Turn 1 Page Ahead

You can read the text at your own speed and can turn pages forward or back. To turn one page ahead, click once with the mouse here on the page underneath the page you're reading.

Click with the mouse or press a key to continue...

MUSIC Screen

This section of the program gives you the opportunity to hear the recordings of over 30 songs from The Wild West era.

Click on any function below - outlined in green - to learn more about that function.



For more Help with The Wild West, click on the **C**ontents button above. This will take you to the Contents window which lists additional topics you can select for more information.

To get out of this Help window and get back to the program, select **E**xit from the **F**ile menu.

LYRICS Screen

This screen plays the song you selected and displays the lyrics for you to read or sing along while the music plays.

Click on any function below - outlined in green - to learn more about that function.



The screenshot shows a music player interface with a central text box containing the lyrics for the song "Drill Ye Tarriers, Drill". The lyrics are displayed over a background of musical notation. At the bottom of the screen, there are five buttons: "STOP", a play/pause icon, "BACK", "MAIN", "HELP", and "QUIT". The "STOP" button, the play/pause icon, and the "BACK", "MAIN", "HELP", and "QUIT" buttons are all outlined in green.

Drill Ye Tarriers, Drill

Ev'ry momin' at seven o'clock,
There's twenty tarriers a workin' on the rock,
And the boss comes along and says "Keep still,
and come down heavy on the cast-iron drill".

And drill ye tarriers drill!
Drill, ye tarriers, drill.
It's work all day
for the sugar in your tay,
Down behind the rail-way.
And drill, ye tarriers, drill, and blast, and fire!

Our new foreman was Jean McCann,
By God, he was a blame mean man,
Last week a premature blast went off,
and mile in the air went big Jim Goff.

And drill ye tarriers drill!
Drill, ye tarriers, drill.
It's work all day for the sugar in your tay,
Down behind the rail-way.
And drill, ye tarriers, drill, and blast, and fire!

STOP [play/pause icon] BACK MAIN HELP QUIT

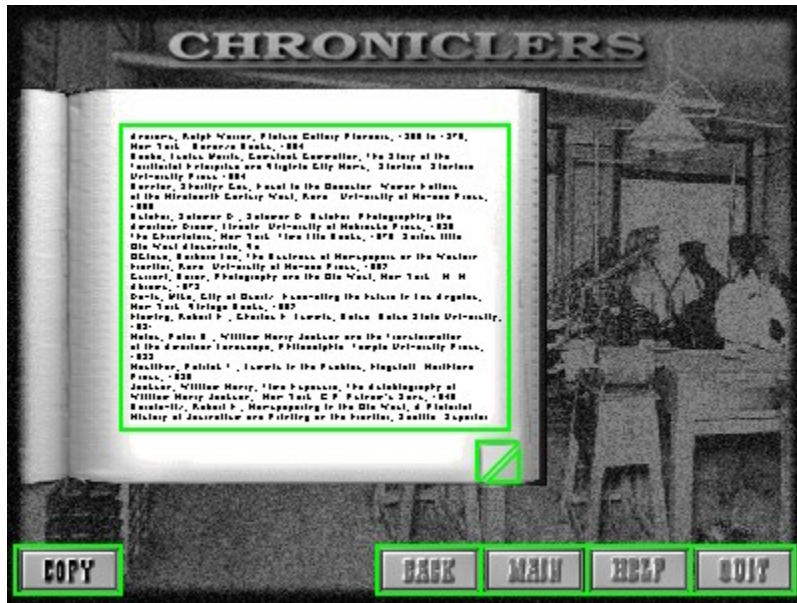
For more Help with The Wild West, click on the **Contents** button above. This will take you to the Contents window which lists additional topics you can select for more information.

To get out of this Help window and get back to the program, select **Exit** from the **File** menu.

BOOKS Screen

The BOOKS Screen displays a bibliography of the selected episodes related works for further study.

Click on any function below - outlined in green - to learn more about that function.



For more Help with The Wild West, click on the **Contents** button above. This will take you to the Contents window which lists additional topics you can select for more information.

To get out of this Help window and get back to the program, select **Exit** from the **File** menu.

Piano Player's Comments

As the piano player waits for you to select a song, he has a few things to say. His remarks appear here.

Click with the mouse or press a key to continue...

Song List

The titles of the songs that are related to the current episode appear here. To select a song to play, click on its title once with the mouse.

Click with the mouse or press a key to continue...

PLAY/STOP Button

This button allows you to play and stop the music. This function switches between playback and stop when clicked with the mouse. You can switch between play and stop anytime.

Click with the mouse or press a key to continue...

VOLUME Button

To adjust the volume of the music, click this button with the mouse and a pop-up volume slider will appear. To change the volume level, click the slide knob and drag it upwards to increase the volume; drag it downwards to decrease the volume.

Click with the mouse or press a key to continue...

Lyrics

The written words of the song appear here.

Please note that some songs are instrumental only and no lyrics will appear when selected.

[Click with the mouse or press a key to continue...](#)

Bibliography

The list of book references related to the current episode appear here.

Click with the mouse or press a key to continue...

